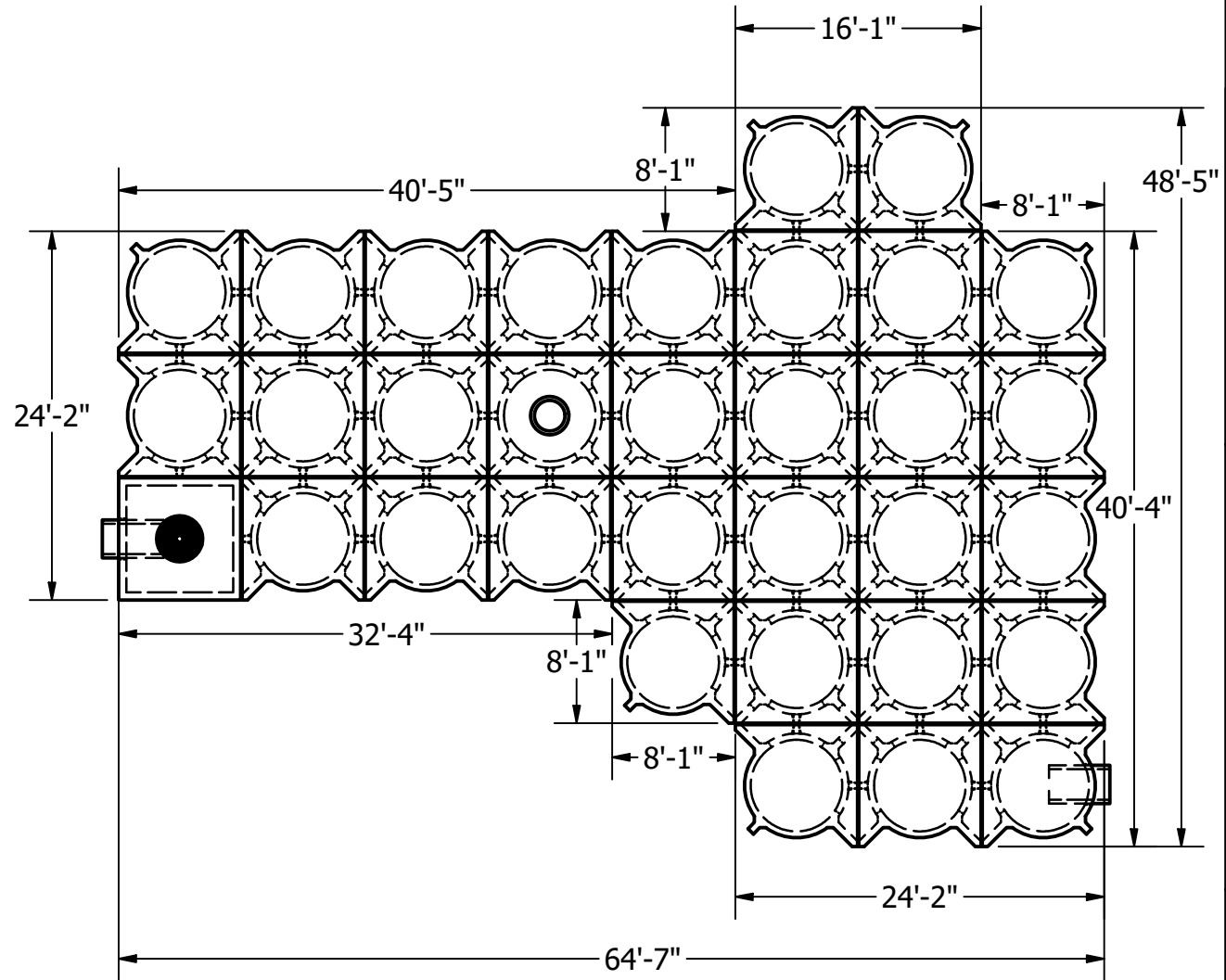


SYSTEM "A"



SYSTEM "B"

TOTAL STORAGE CAPACITY: 24,780 CB/FT

**MATERIALS**

Materials used in this work shall conform to ACI (American Concrete Institute)

**CONCRETE**

28 Day Compressive 5000 psi (Minimum)  
 Self-Consolidating per ACI 237R-07  
 ASTM C1611/C1611M-14 Standard Test Method for Slump Flow  
 Lifting Strength 2000 psi (Minimum)

**REINFORCING STEEL**

Reinforcing Bars shall conform to: ASTM A615, Grade 60  
 Reinforcing Mesh shall conform to: ASTM A1064, Grade 70  
 Reinforcing Cover: 1.5" minimum

**DESIGN**

Designed in accordance with the AASHTO Standard Specifications, 17th Edition for HS-20 Live Load.

REVISIONS:	No.	DATE	DESCRIPTION

THE CONTENTS OF THESE DRAWINGS ARE THE PROPERTY OF PRECON PRODUCTS AND ARE PROPRIETARY AND CONFIDENTIAL. THESE DOCUMENTS SHALL NOT BE DISSEMINATED FOR ANY OTHER USE, WITHOUT THE WRITTEN CONSENT OF PRECON PRODUCTS. IF YOU RECEIVE THESE DRAWINGS IN ERROR, RETURN TO SENDER WITHOUT READING, COPYING, OR DISCLOSING THE CONTENTS.

240 W LOS ANGELES AVE  
 SIMI VALLEY, CA 93065  
 P: (805) 527-0841 F: (805) 584-0769  
 WWW.PRE-CONPRODUCTS.COM

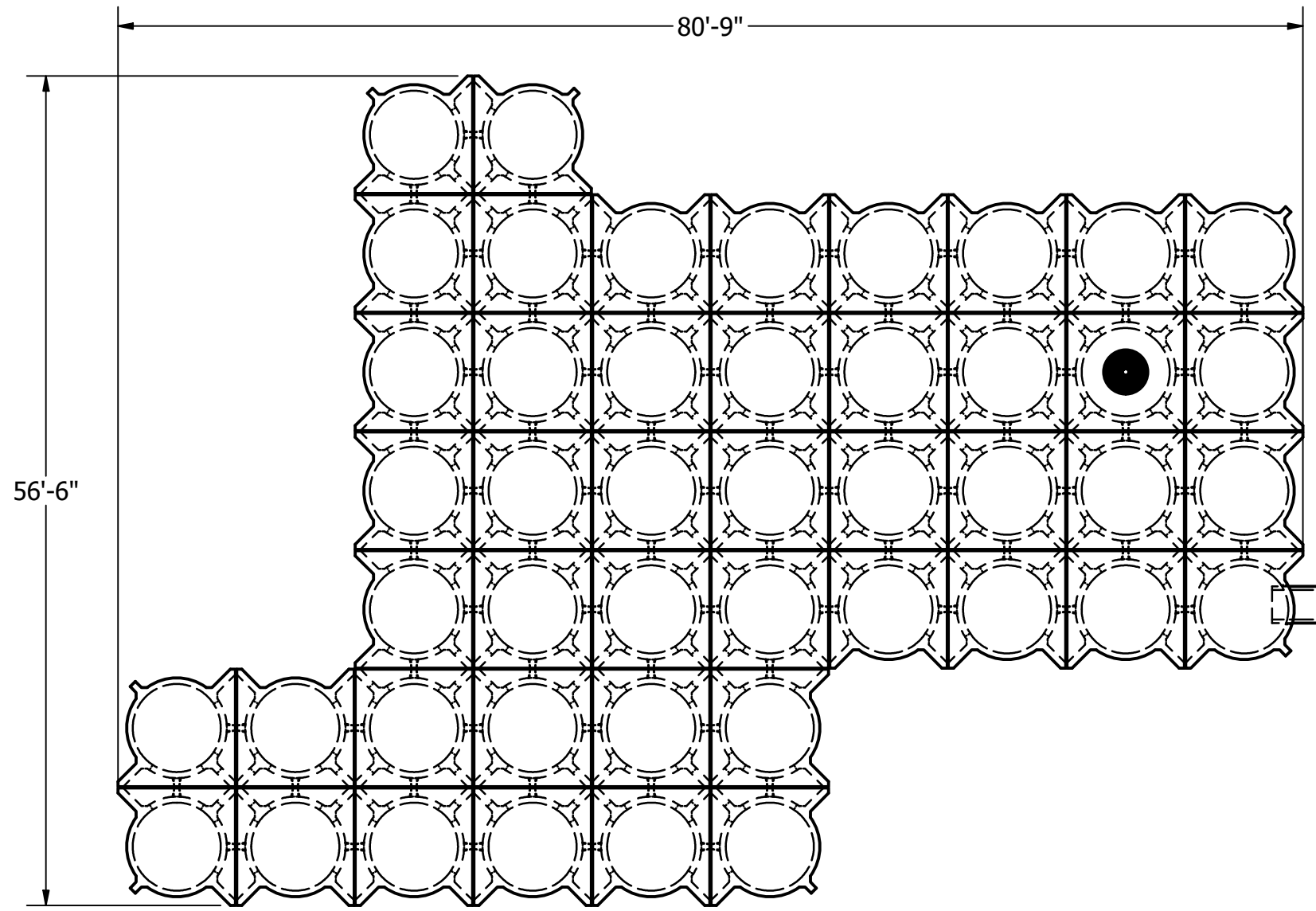
Oxnard

TITLE:  
 DRAWN BY:  
 K.STRADER

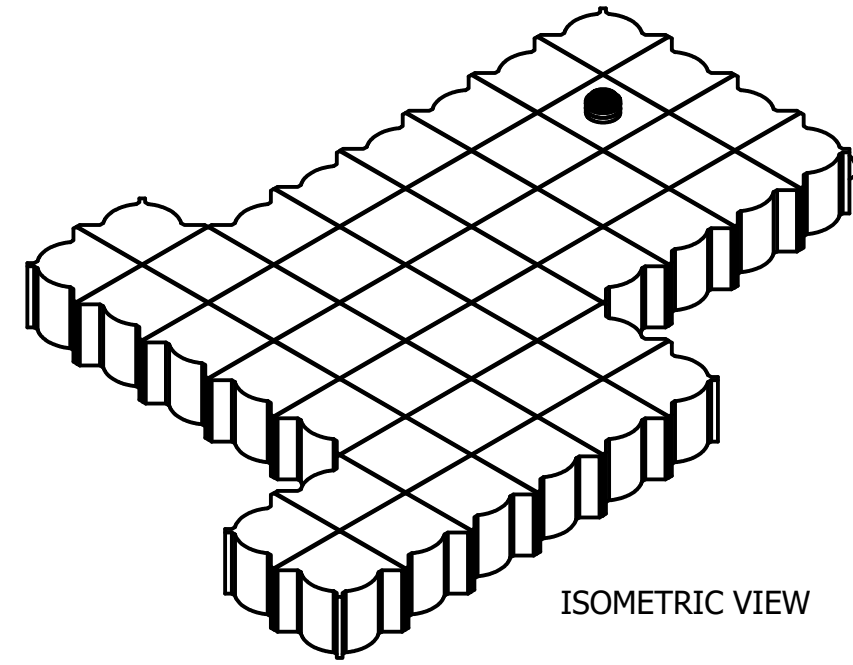
DATE:  
 5/22/2018

SHEET:  
 1 OF 3

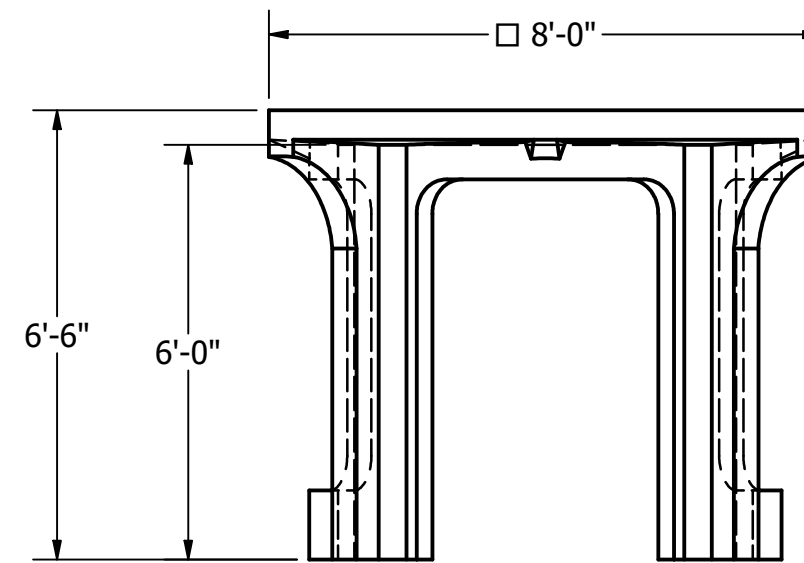
LOCATION: S:\Vault\Design\Storm Prism\BWE Eng\11 DMA North\DEL PRADO NORTH



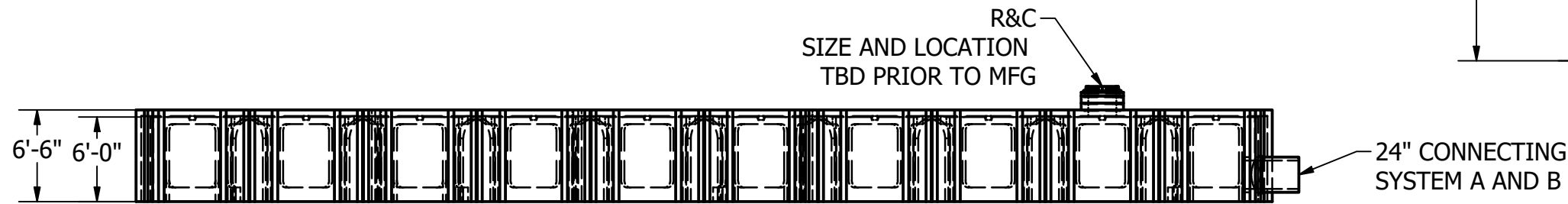
PLAN VIEW



ISOMETRIC VIEW



CENTER UNIT



PROFILE VIEW

R&C  
SIZE AND LOCATION  
TBD PRIOR TO MFG

24" CONNECTING  
SYSTEM A AND B

SIZE AND LOCATION OF ALL OPENINGS TBD

SYSTEM INFO "A"			
PART NO.	QTY	APPOX. WEIGHT	YARDS
SP360-SL-CENTER-72	19	9,100 LBS	2.30 YDS
SP360-SL-SIDE-72	20	10,100 LBS	2.55 YDS
SP360-SL-CORNER-72	7	11,400 LBS	2.85 YDS

**MATERIALS**

Materials used in this work shall conform to ACI (American Concrete Institute)

**CONCRETE**

28 Day Compressive 5000 psi (Minimum)  
Self-Consolidating per ACI 237R-07  
ASTM C1611/C1611M-14 Standard Test Method for Slump Flow  
Lifting Strength 2000 psi (Minimum)

**REINFORCING STEEL**

Reinforcing Bars shall conform to: ASTM A615, Grade 60  
Reinforcing Mesh shall conform to: ASTM A1064, Grade 70  
Reinforcing Cover: 1.5" minimum

**DESIGN**

Designed in accordance with the AASHTO Standard Specifications, 17th Edition for HS-20 Live Load.

REVISIONS:	No.	DATE	SHEET	DESCRIPTION

THE CONTENTS OF THESE DRAWINGS ARE THE PROPERTY OF PRECON PRODUCTS AND ARE PROPRIETARY AND CONFIDENTIAL. THESE DOCUMENTS SHALL NOT BE DISSEMINATED FOR ANY OTHER USE, WITHOUT THE WRITTEN CONSENT OF PRECON PRODUCTS. IF YOU RECEIVE THESE DRAWINGS IN ERROR, RETURN TO SENDER WITHOUT READING, COPYING, OR DISCLOSING THE CONTENTS.

240 W LOS ANGELES AVE  
SIMI VALLEY, CA 93065  
P: (805) 527-0841 F: (805) 584-0769  
WWW.PRE-CONPRODUCTS.COM

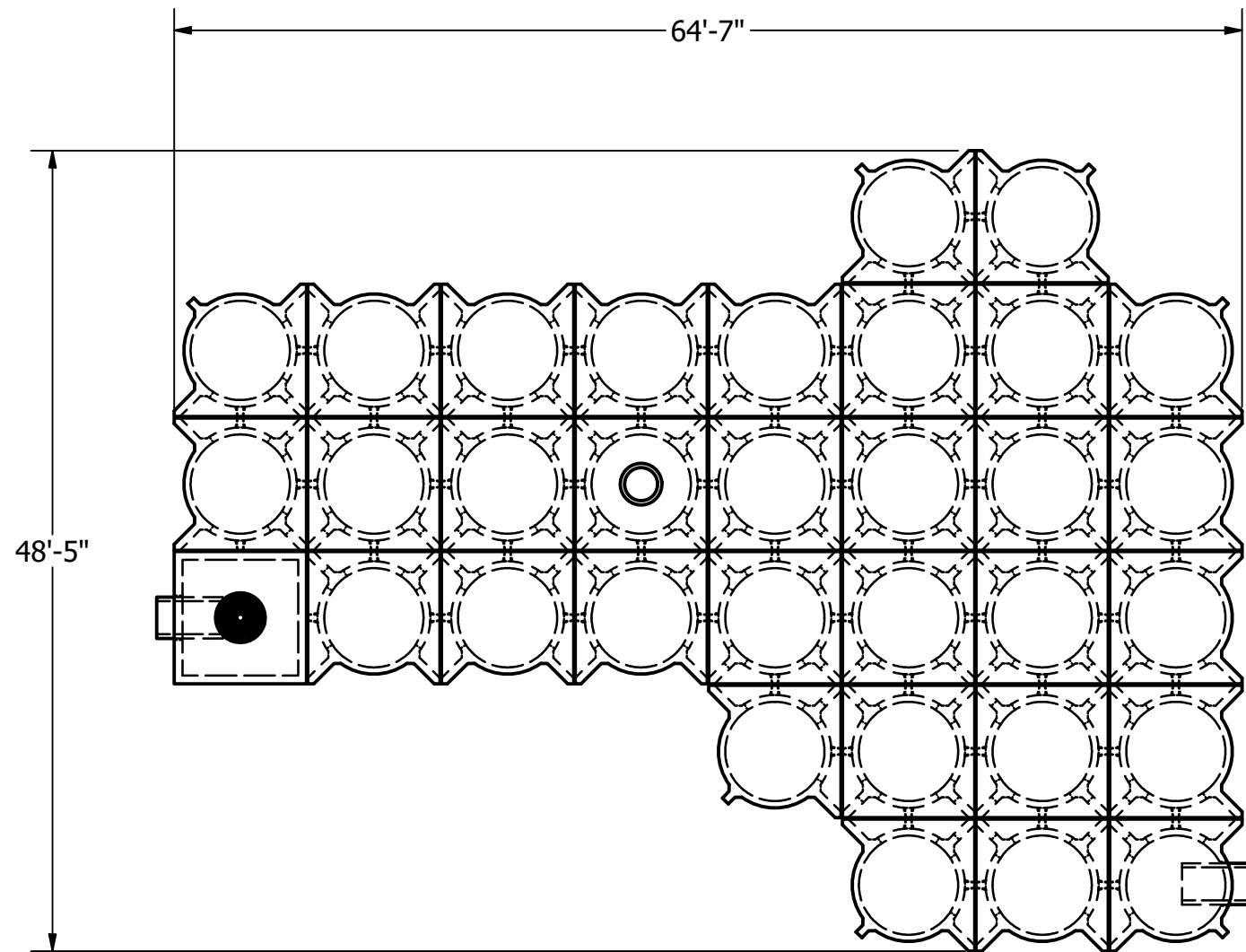
OXNARD

TITLE:  
DRAWN BY:  
K.STRADER

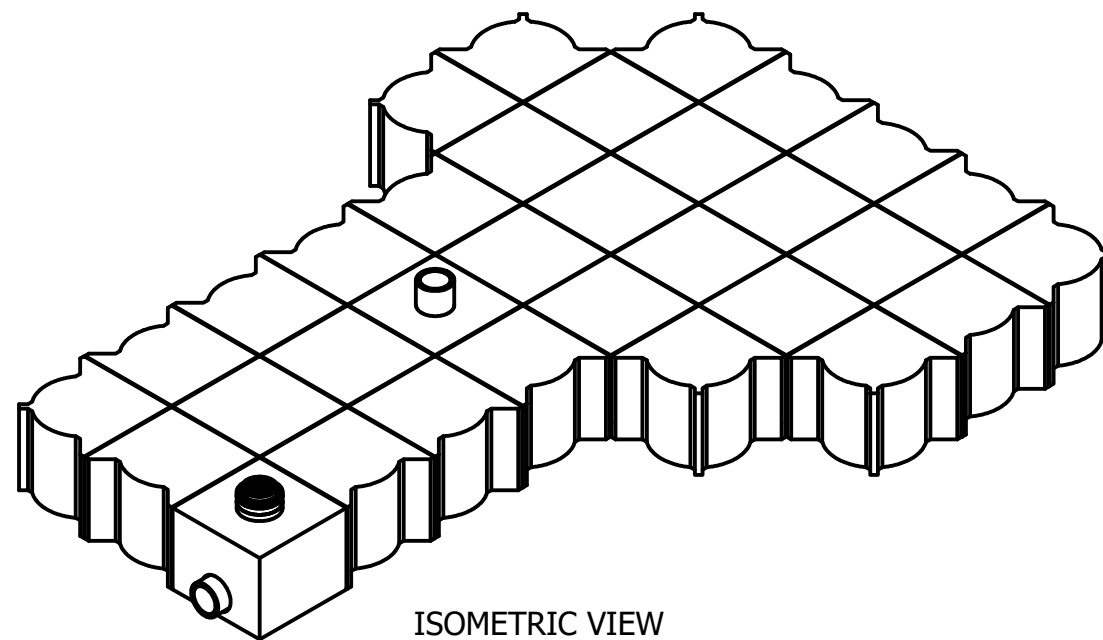
DATE:  
5/22/2018

SHEET:  
2 OF 3

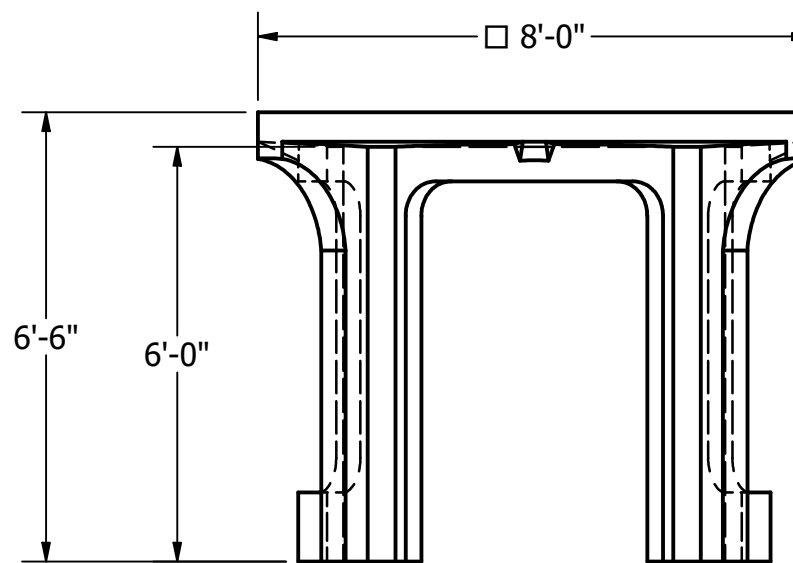
LOCATION:



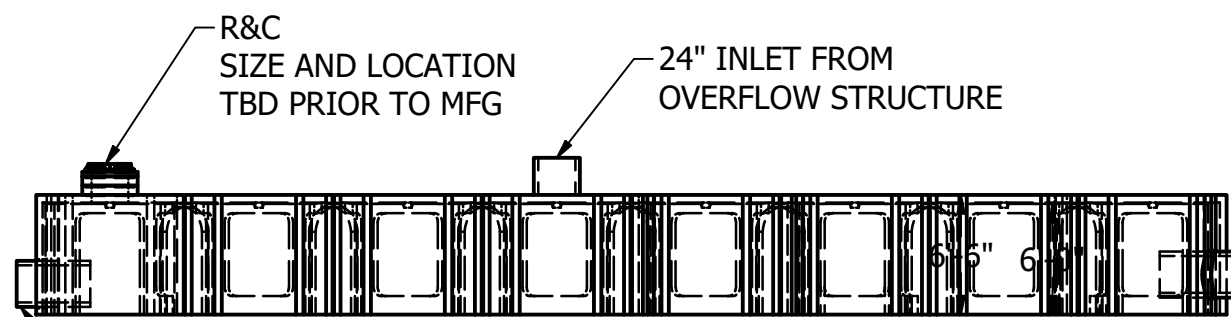
PLAN VIEW



ISOMETRIC VIEW



CENTER UNIT



PROFILE VIEW

SIZE AND LOCATION OF ALL OPENINGS TBD

SYSTEM INFO "A"			
PART NO.	QTY	APPOX. WEIGHT	YARDS
SP360-SL-CENTER-72	13	9,100 LBS	2.30 YDS
SP360-SL-SIDE-72	11	10,100 LBS	2.55 YDS
SP360-SL-CORNER-72	7	11,400 LBS	2.85 YDS
84x84x72	1	18,100 LBS	4.50 YDS

**MATERIALS**

Materials used in this work shall conform to ACI (American Concrete Institute)

**CONCRETE**

28 Day Compressive 5000 psi (Minimum)  
Self-Consolidating per ACI 237R-07  
ASTM C1611/C1611M-14 Standard Test Method for Slump Flow  
Lifting Strength 2000 psi (Minimum)

**REINFORCING STEEL**

Reinforcing Bars shall conform to: ASTM A615, Grade 60  
Reinforcing Mesh shall conform to: ASTM A1064, Grade 70  
Reinforcing Cover: 1.5" minimum

**DESIGN**

Designed in accordance with the AASHTO Standard Specifications, 17th Edition for HS-20 Live Load.

REVISIONS:	No.	DATE	DESCRIPTION

THE CONTENTS OF THESE DRAWINGS ARE THE PROPERTY OF PRECON PRODUCTS AND ARE PROPRIETARY AND CONFIDENTIAL. THESE DOCUMENTS SHALL NOT BE DISSEMINATED FOR ANY OTHER USE, WITHOUT THE WRITTEN CONSENT OF PRECON PRODUCTS. IF YOU RECEIVE THESE DRAWINGS IN ERROR, RETURN TO SENDER WITHOUT READING, COPYING, OR DISCLOSING THE CONTENTS.

240 W LOS ANGELES AVE  
SIMI VALLEY, CA 93065  
P: (805) 527-0841 F: (805) 584-0769  
WWW.PRE-CONPRODUCTS.COM

TITLE: OXNARD

DRAWN BY: K.STRADER

DATE: 5/22/2018

SHEET: 3 OF 3

LOCATION: