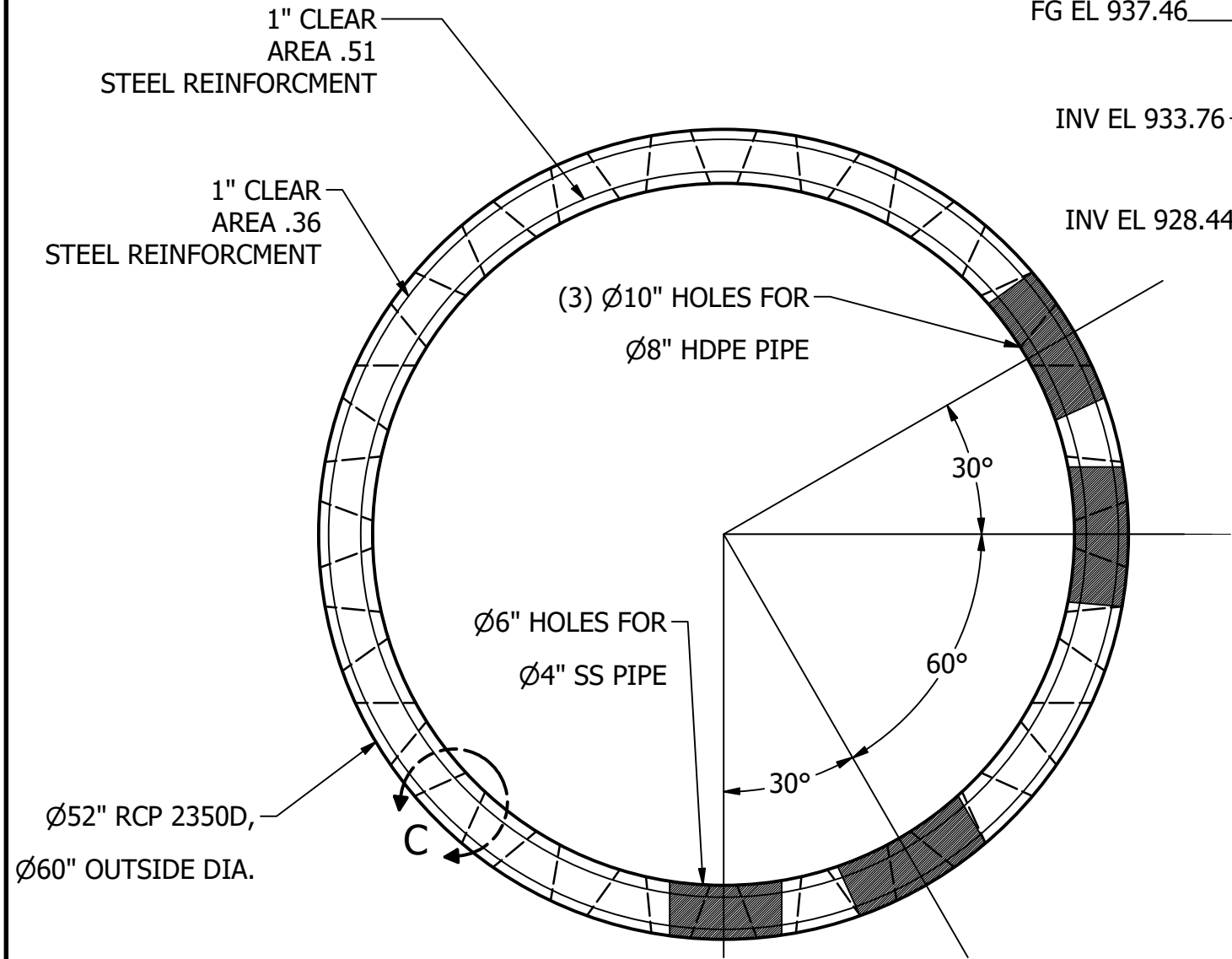


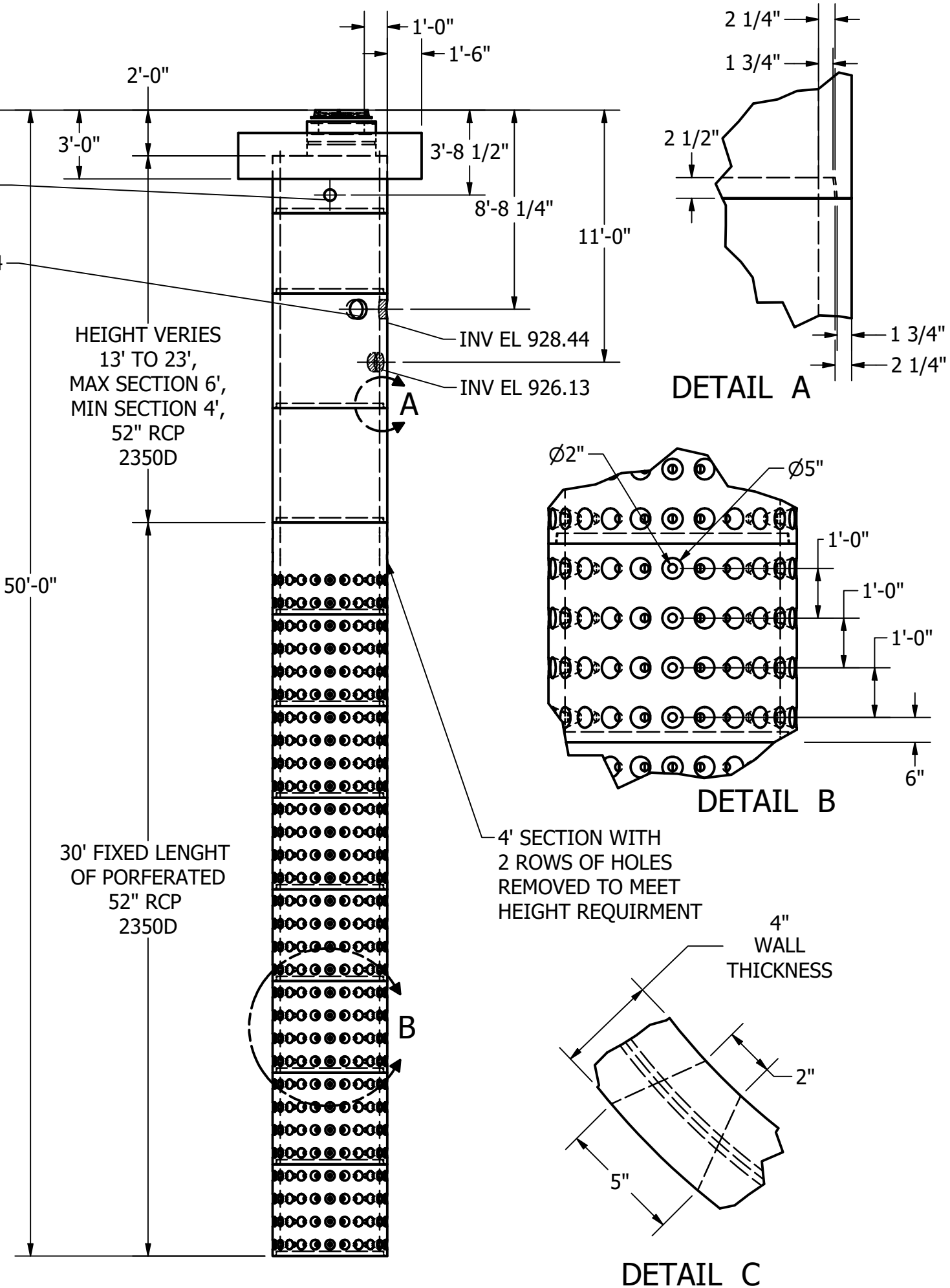
DRYWELL # A



CONCRETE
 28 Day Compressive 5000 psi
 Mix Design 1418638
 Self-Consolidating per ACI 237R-07
 ASTM C1611/C1611M-14 Standard Test Method for Slump Flow
 Lifting Strength 2000 psi (Minimum)

SEE SHEET 6 FOR FLAT TOP INFORMATION

PARTS LIST			
PART NUMBER	QTY	DESCRIPTION	APPROX. WEIGHT
DW52x48P	7	DRYWELL SHAFT 48" TALL PERFORATED	2,800 LBS
DW52x48P-SPL	1	DRYWELL SHAFT 48" TALL PERFORATED, WITH TWO ROWS OF HOLES REMOVED	3,000 LBS
DW52x60	2	DRYWELL SHAFT 60" TALL	3,700 LBS
DW52x42	1	DRYWELL SHAFT 42" TALL	2,600 LBS
DW52x30	1	DRYWELL SHAFT 30" TALL	1,850 LBS
DWT96x96	1	DRYWELL SPECIAL TOP	14,400 LBS



REVISIONS:	DATE	DESCRIPTION
No.		

THE CONTENTS OF THESE DRAWINGS ARE THE PROPERTY OF PRECON PRODUCTS AND ARE PROPRIETARY AND CONFIDENTIAL. THESE DOCUMENTS SHALL NOT BE DISSEMINATED FOR ANY OTHER USE, WITHOUT THE WRITTEN CONSENT OF PRECON PRODUCTS. IF YOU RECEIVE THESE DRAWINGS IN ERROR, RETURN TO SENDER WITHOUT READING, COPYING, OR DISCLOSING THE CONTENTS.



TITLE: **DRYWELL A,**
LOS ANGELES COUNTY

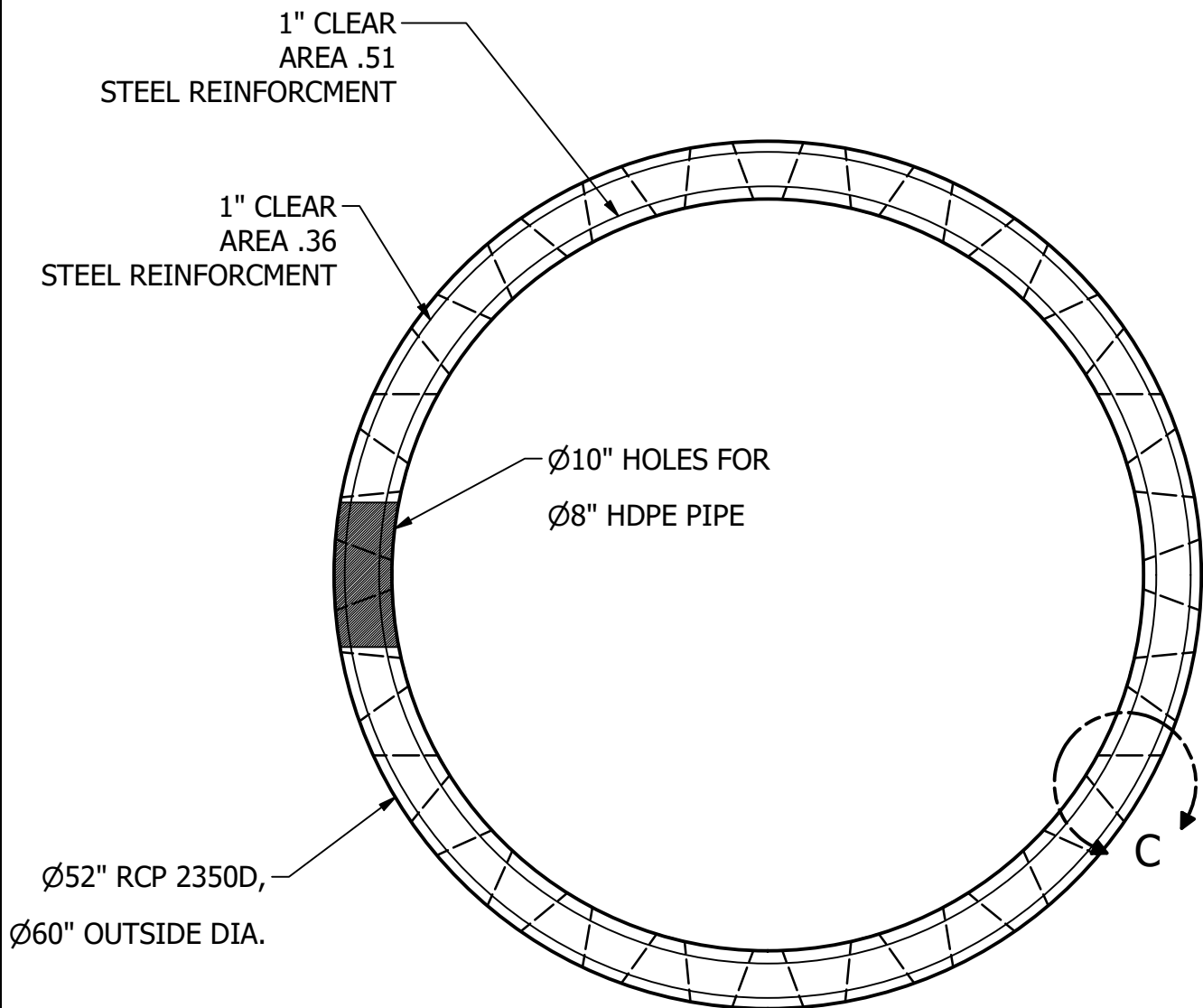
DRAWN BY: **K.STRADER**

DATE: **1/31/2019**

SHEET: **1 OF 6**

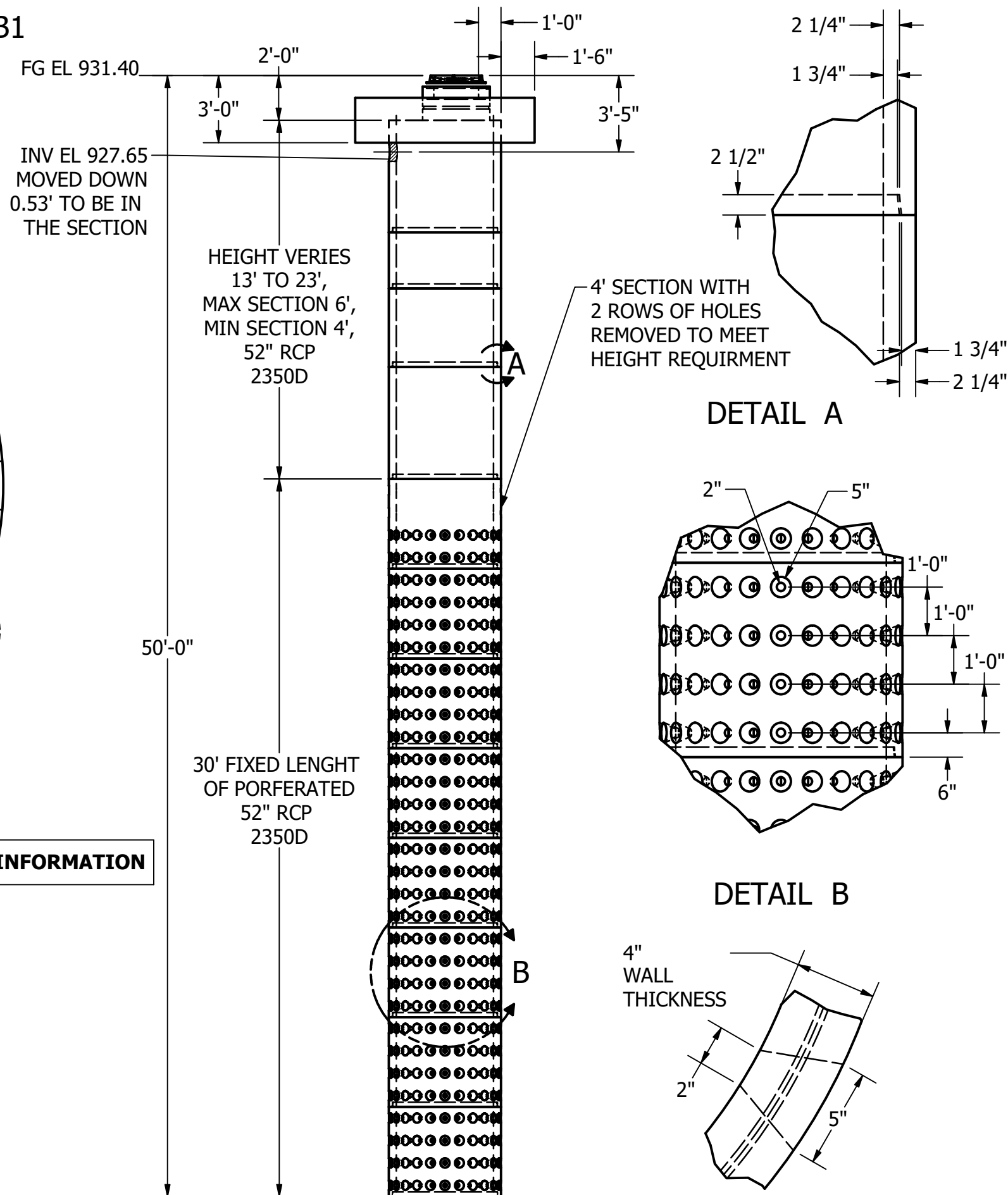
LOCATION:

DRYWELL # B1



CONCRETE
 28 Day Compressive 5000 psi
 Mix Design 1418638
 Self-Consolidating per ACI 237R-07
 ASTM C1611/C1611M-14 Standard Test Method for Slump Flow
 Lifting Strength 2000 psi (Minimum)

SEE SHEET 6 FOR FLAT TOP INFORMATION



PARTS LIST

PART NUMBER	QTY	DESCRIPTION	APPROX. WEIGHT
DW52x48P	7	DRYWELL SHAFT 48" TALL PERFORATED	2,800 LBS
DW52X48P-SPL	1	DRYWELL SHAFT 48" TALL PERFORATED, WITH TWO ROWS OF HOLES REMOVED	3,000 LBS
DW52x60	2	DRYWELL SHAFT 60" TALL	3,700 LBS
DW52x42	1	DRYWELL SHAFT 42" TALL	2,600 LBS
DW52X30	1	DRYWELL SHAFT 30" TALL	1,850 LBS
DWT96x96	1	DRYWELL SPECIAL TOP	14,400 LBS

REVISIONS:	DATE	DESCRIPTION
No.		

THE CONTENTS OF THESE DRAWINGS ARE THE PROPERTY OF PRECON PRODUCTS AND ARE PROPRIETARY AND CONFIDENTIAL. THESE DOCUMENTS SHALL NOT BE DISSEMINATED FOR ANY OTHER USE, WITHOUT THE WRITTEN CONSENT OF PRECON PRODUCTS. IF YOU RECEIVE THESE DRAWINGS IN ERROR, RETURN TO SENDER WITHOUT READING, COPYING, OR DISCLOSING THE CONTENTS.

240 W LOS ANGELES AVE
 SIMI VALLEY, CA 93065
 P: (805) 527-0841 F: (805) 584-0769
 WWW.PRE-CONPRODUCTS.COM

TITLE: **DRYWELL B1, LOS ANGELES COUNTY**

DRAWN BY: **K.STRADER**

DATE: **1/31/2019**

SHEET: **2 OF 6**

LOCATION:

DRYWELL # B2

FG EL 933.89

INV EL 928.18

1" CLEAR AREA .51
STEEL REINFORCMENT

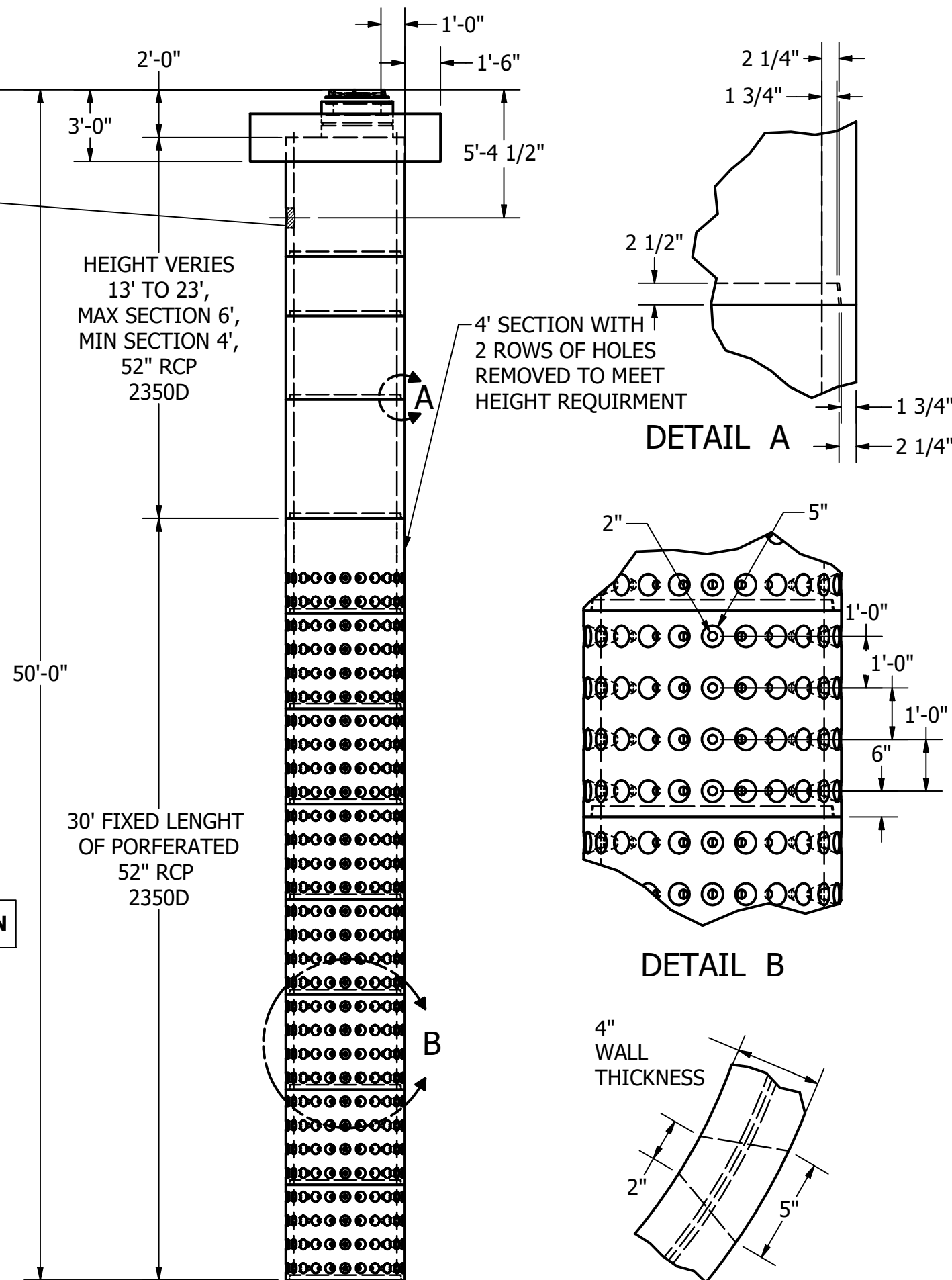
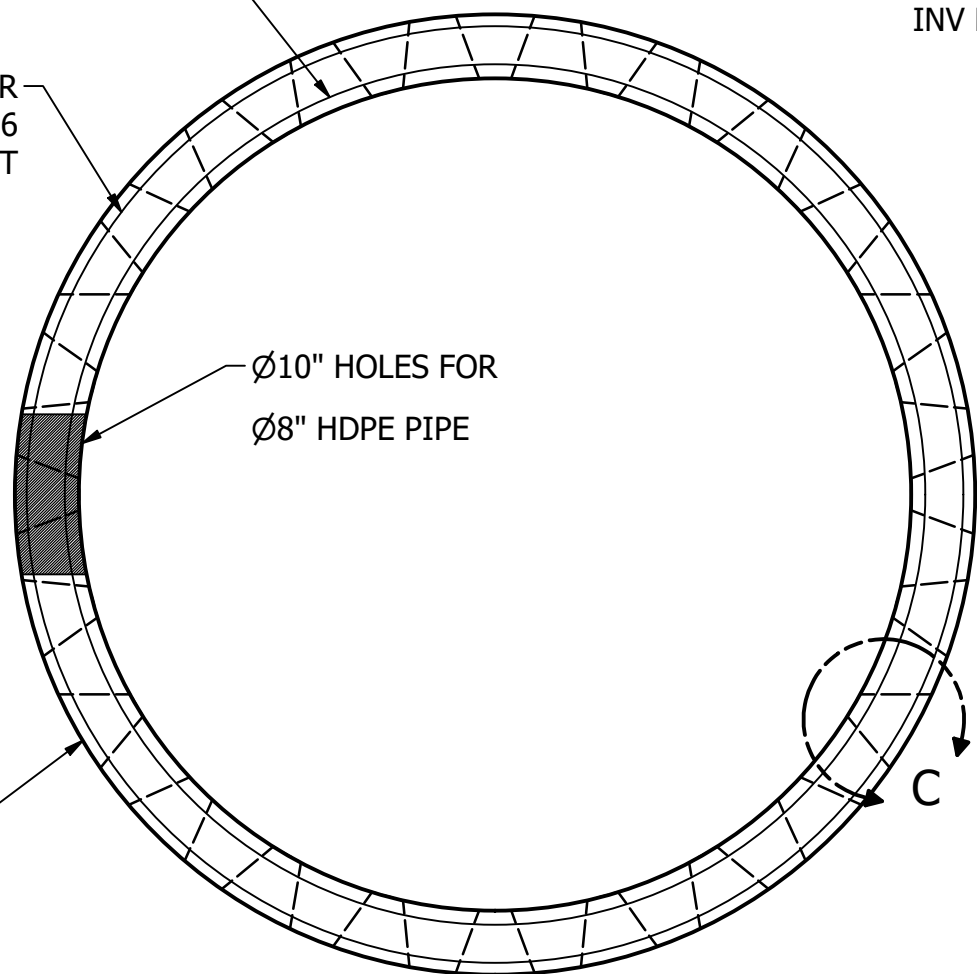
1" CLEAR AREA .36
STEEL REINFORCMENT

Ø10" HOLES FOR
Ø8" HDPE PIPE

Ø52" RCP 2350D,
Ø60" OUTSIDE DIA.

CONCRETE
28 Day Compressive 5000 psi
Mix Design 1418638
Self-Consolidating per ACI 237R-07
ASTM C1611/C1611M-14 Standard Test Method for Slump Flow
Lifting Strength 2000 psi (Minimum)

SEE SHEET 6 FOR FLAT TOP INFORMATION



PARTS LIST

PART NUMBER	QTY	DESCRIPTION	APPROX. WEIGHT
DW52x48P	7	DRYWELL SHAFT 48" TALL PERFORATED	2,800 LBS
DW52X48P-SPL	1	DRYWELL SHAFT 48" TALL PERFORATED, WITH TWO ROWS OF HOLES REMOVED	3,000 LBS
DW52x60	2	DRYWELL SHAFT 60" TALL	3,700 LBS
DW52x42	1	DRYWELL SHAFT 42" TALL	2,600 LBS
DW52X30	1	DRYWELL SHAFT 30" TALL	1,850 LBS
DWT96x96	1	DRYWELL SPECIAL TOP	14,400 LBS

REVISIONS:	No.	DATE	DESCRIPTION

THE CONTENTS OF THESE DRAWINGS ARE THE PROPERTY OF PRECON PRODUCTS AND ARE PROPRIETARY AND CONFIDENTIAL. THESE DOCUMENTS SHALL NOT BE DISSEMINATED FOR ANY OTHER USE, WITHOUT THE WRITTEN CONSENT OF PRECON PRODUCTS. IF YOU RECEIVE THESE DRAWINGS IN ERROR, RETURN TO SENDER WITHOUT READING, COPYING, OR DISCLOSING THE CONTENTS.

PRECON
240 W LOS ANGELES AVE
SIMI VALLEY, CA 93065
P: (805) 527-0841 F: (805) 584-0769
WWW.PRE-CONPRODUCTS.COM

TITLE: **DRYWELL #B2,**
LOS ANGELES COUNTY

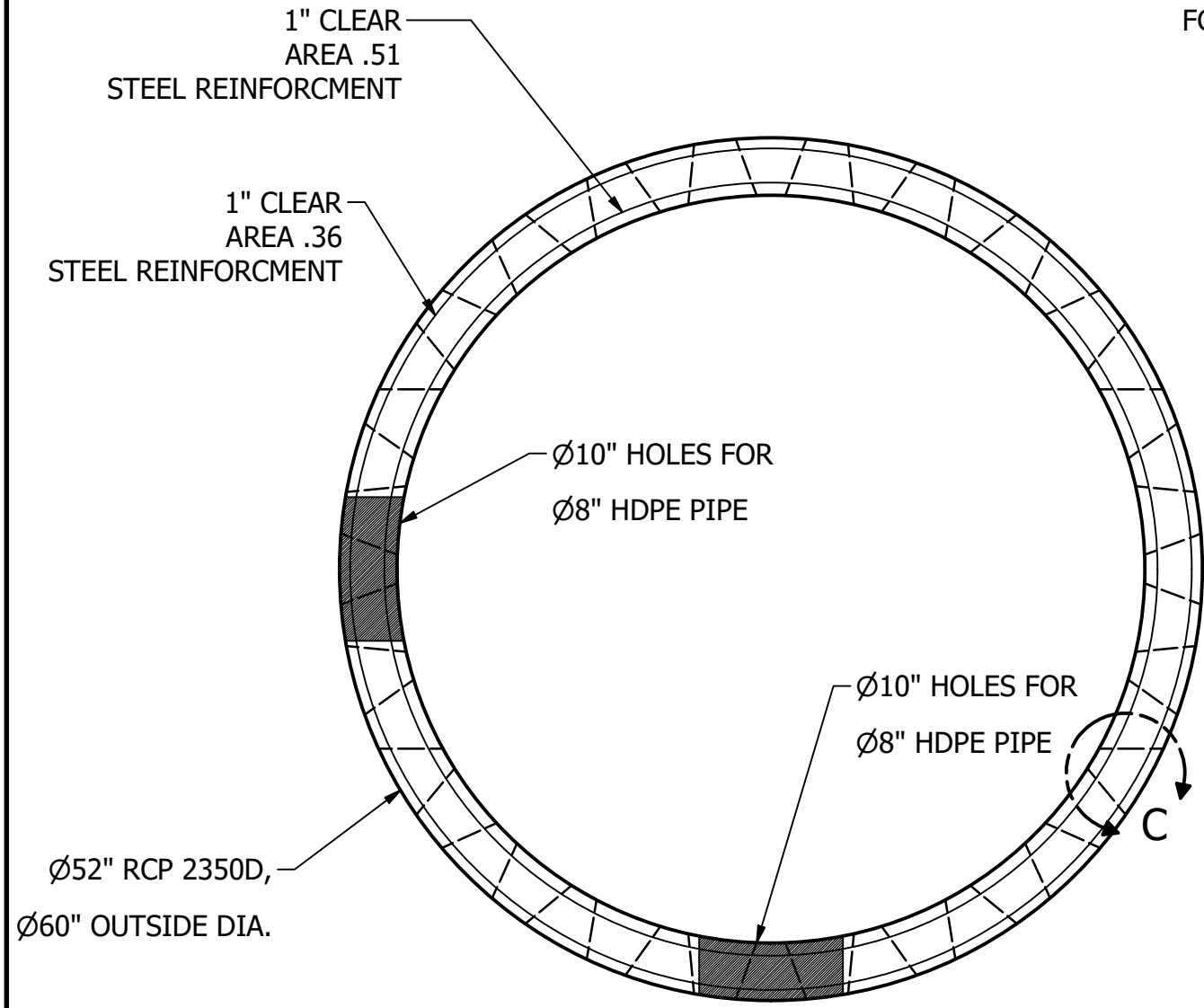
DRAWN BY: **K.STRADER**

DATE: **1/31/2019**

SHEET: **3 OF 6**

LOCATION:

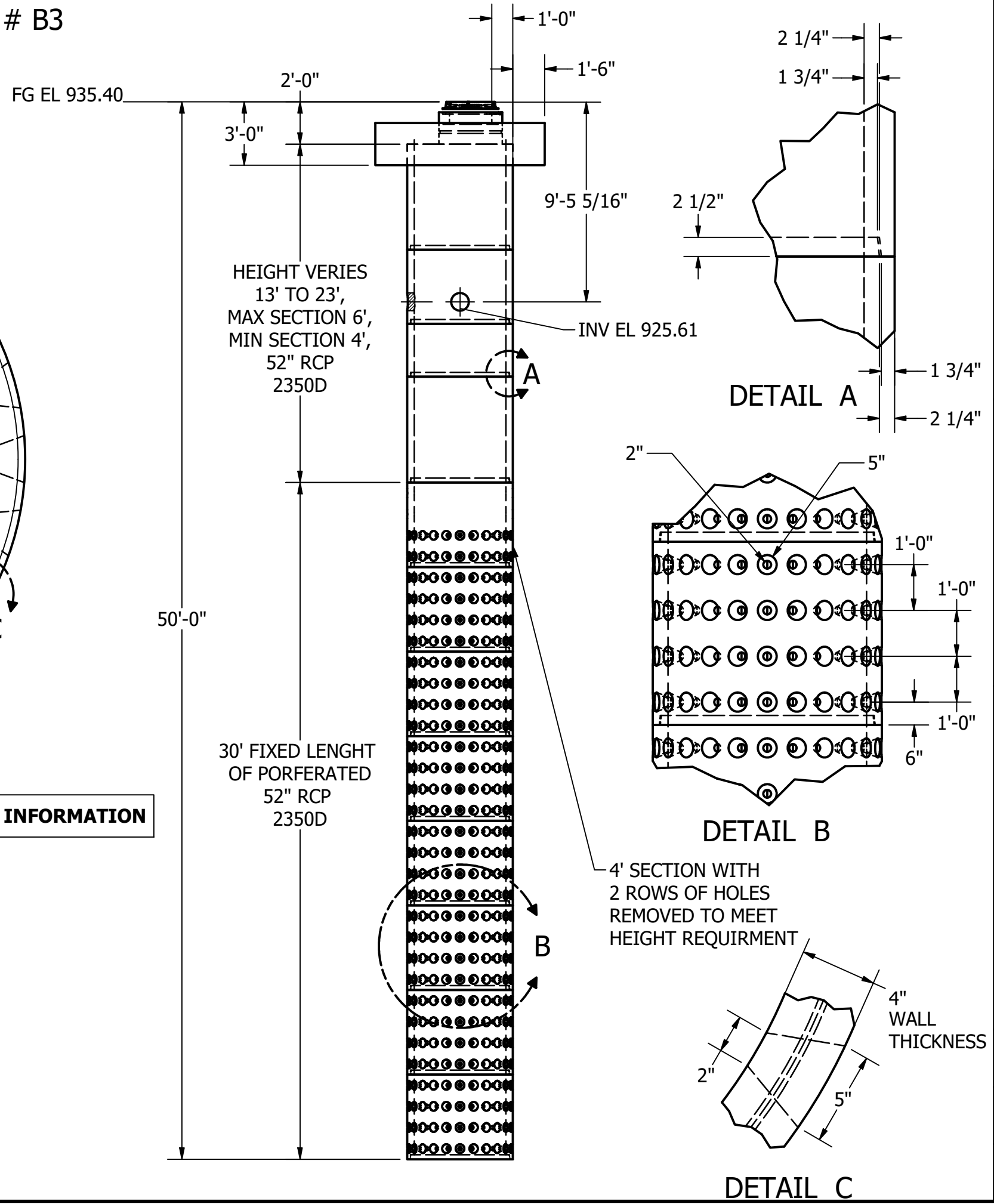
DRYWELL # B3



SEE SHEET 6 FOR FLAT TOP INFORMATION

CONCRETE
 28 Day Compressive 5000 psi
 Mix Design 1418638
 Self-Consolidating per ACI 237R-07
 ASTM C1611/C1611M-14 Standard Test Method for Slump Flow
 Lifting Strength 2000 psi (Minimum)

PARTS LIST			
PART NUMBER	QTY	DESCRIPTION	APPROX. WEIGHT
DW52x48P	7	DRYWELL SHAFT 48" TALL PERFORATED	2,800 LBS
DW52x48P-SPL	1	DRYWELL SHAFT 48" TALL PERFORATED, WITH TWO ROWS OF HOLES REMOVED	3,000 LBS
DW52x60	2	DRYWELL SHAFT 60" TALL	3,700 LBS
DW52x42	1	DRYWELL SHAFT 42" TALL	2,600 LBS
DW52x30	1	DRYWELL SHAFT 30" TALL	1,850 LBS
DWT96x96	1	DRYWELL SPECIAL TOP	14,400 LBS



REVISIONS:	No.	DATE	DESCRIPTION

THE CONTENTS OF THESE DRAWINGS ARE THE PROPERTY OF PRECON PRODUCTS AND ARE PROPRIETARY AND CONFIDENTIAL. THESE DOCUMENTS SHALL NOT BE DISSEMINATED FOR ANY OTHER USE, WITHOUT THE WRITTEN CONSENT OF PRECON PRODUCTS. IF YOU RECEIVE THESE DRAWINGS IN ERROR, RETURN TO SENDER WITHOUT READING, COPYING, OR DISCLOSING THE CONTENTS.

240 W LOS ANGELES AVE
 SIMI VALLEY, CA 93065
 P: (805) 527-0841 F: (805) 584-0769
 WWW.PRE-CONPRODUCTS.COM

TITLE: **DRYWELL #B3, LOS ANGELES COUNTY**

DRAWN BY: **K.STRADER**

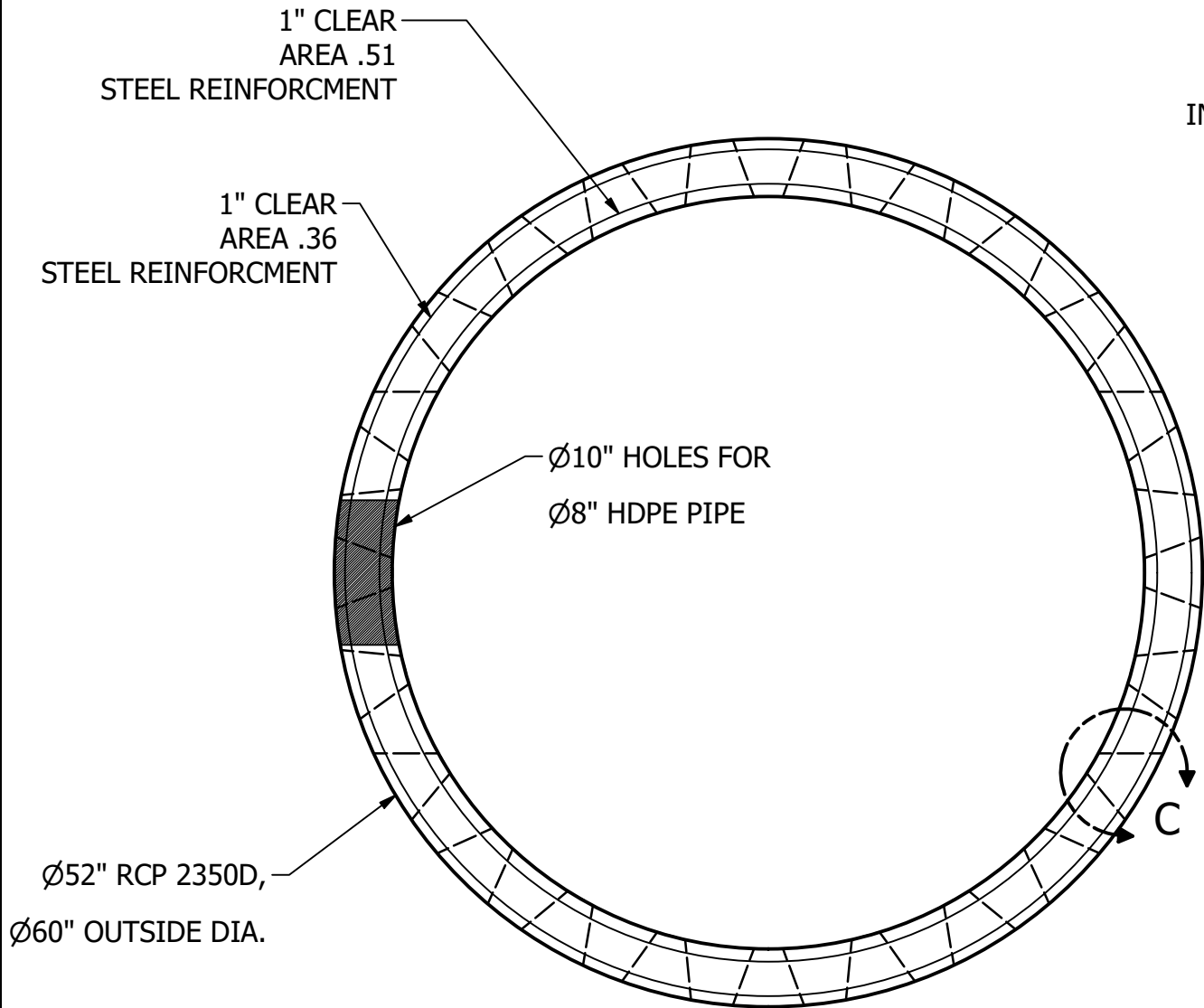
DATE: **1/31/2019**

SHEET: **4 OF 6**

LOCATION:

DRYWELL # B4

FG EL 929.44
INV EL 925.16

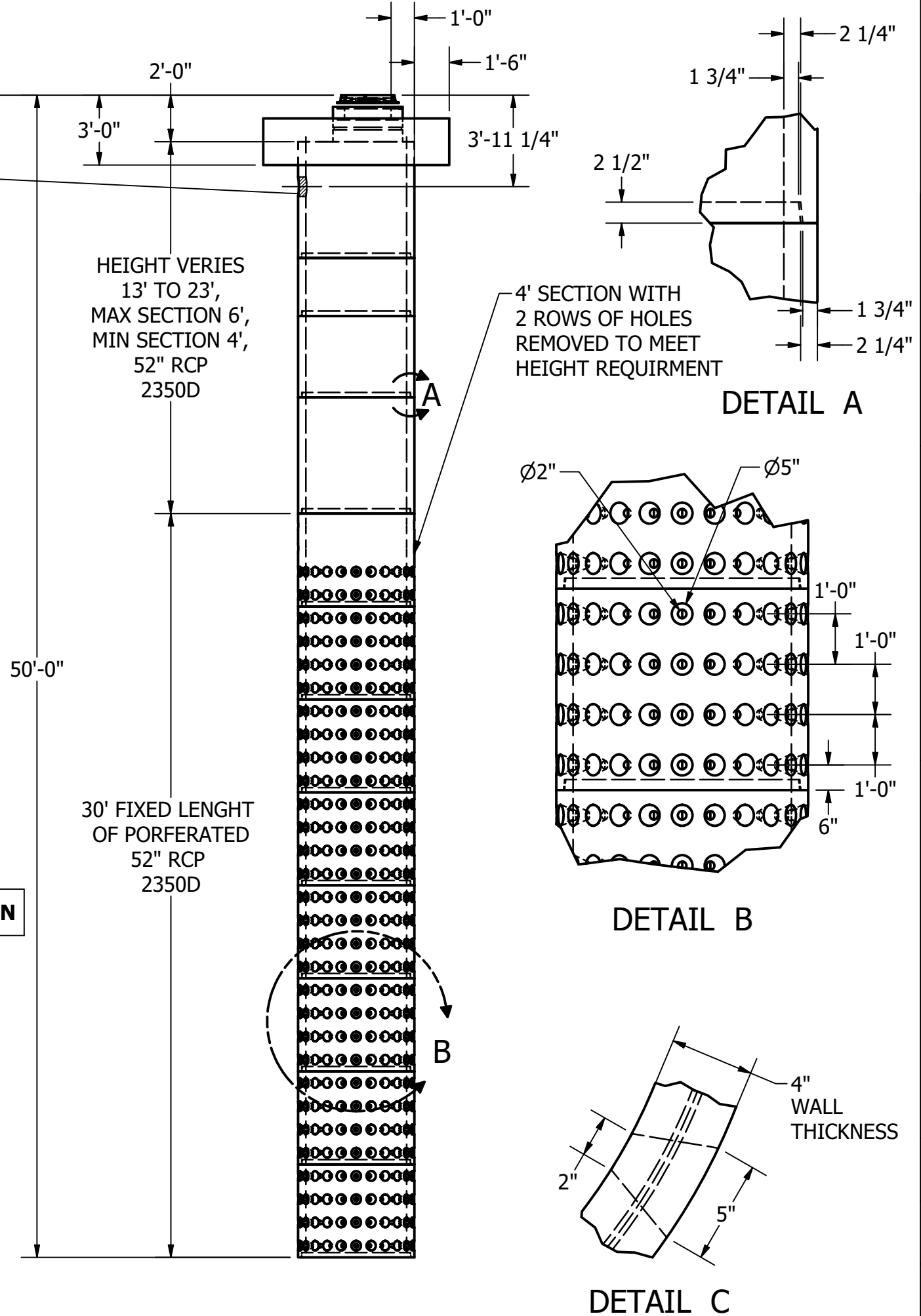


SEE SHEET 6 FOR FLAT TOP INFORMATION

CONCRETE
28 Day Compressive 5000 psi
Mix Design 1418638
Self-Consolidating per ACI 237R-07
ASTM C1611/C1611M-14 Standard Test Method for Slump Flow
Lifting Strength 2000 psi (Minimum)

PARTS LIST

PART NUMBER	QTY	DESCRIPTION	APPROX. WEIGHT
DW52x48P	7	DRYWELL SHAFT 48" TALL PERFORATED	2,800 LBS
DW52X48P-SPL	1	DRYWELL SHAFT 48" TALL PERFORATED, WITH TWO ROWS OF HOLES REMOVED	3,000 LBS
DW52x60	2	DRYWELL SHAFT 60" TALL	3,700 LBS
DW52x42	1	DRYWELL SHAFT 42" TALL	2,600 LBS
DW52X30	1	DRYWELL SHAFT 30" TALL	1,850 LBS
DWT96x96	1	DRYWELL SPECIAL TOP	14,400 LBS



REVISIONS:	DATE	DESCRIPTION
No.		

THE CONTENTS OF THESE DRAWINGS ARE THE PROPERTY OF PRECON PRODUCTS AND ARE PROPRIETARY AND CONFIDENTIAL. THESE DOCUMENTS SHALL NOT BE DISSEMINATED FOR ANY OTHER USE, WITHOUT THE WRITTEN CONSENT OF PRECON PRODUCTS. IF YOU RECEIVE THESE DRAWINGS IN ERROR, RETURN TO SENDER WITHOUT READING, COPYING, OR DISCLOSING THE CONTENTS.



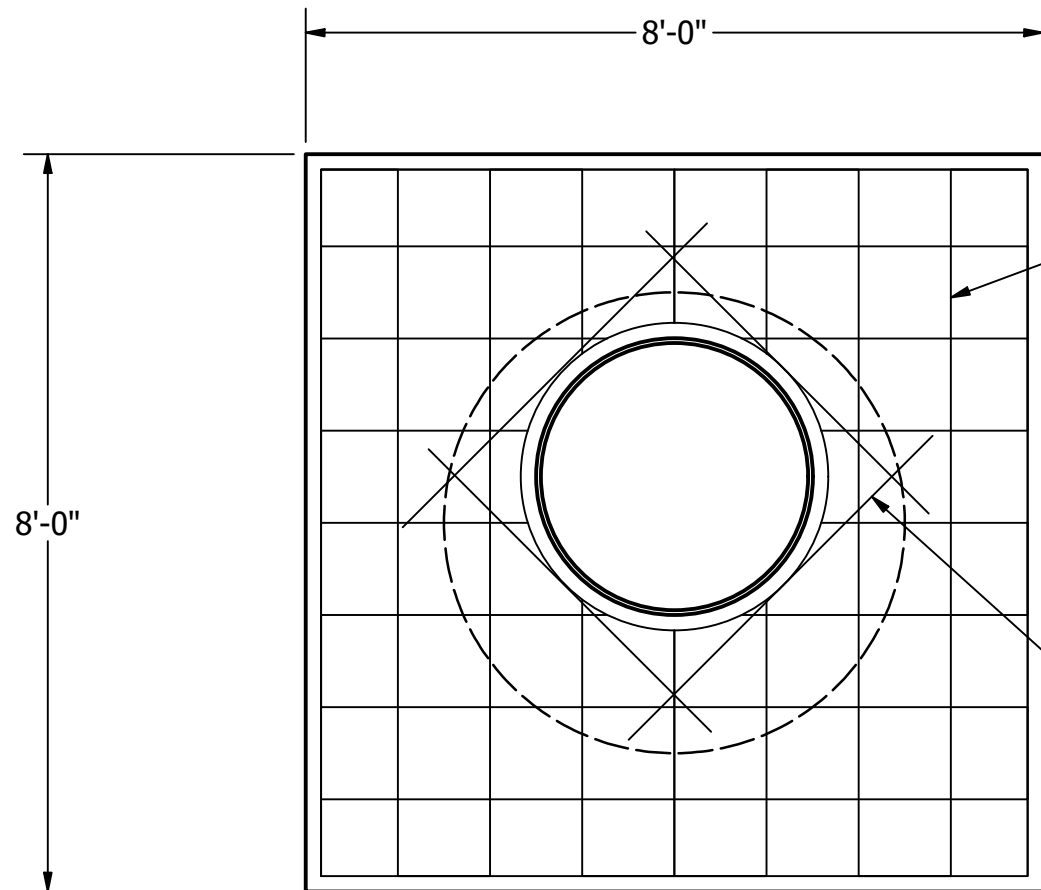
TITLE: **DRYWELL #B4,**
LOS ANGELES COUNTY

DRAWN BY: **K.STRADER**

DATE: **1/31/2019**

SHEET: **5 OF 6**

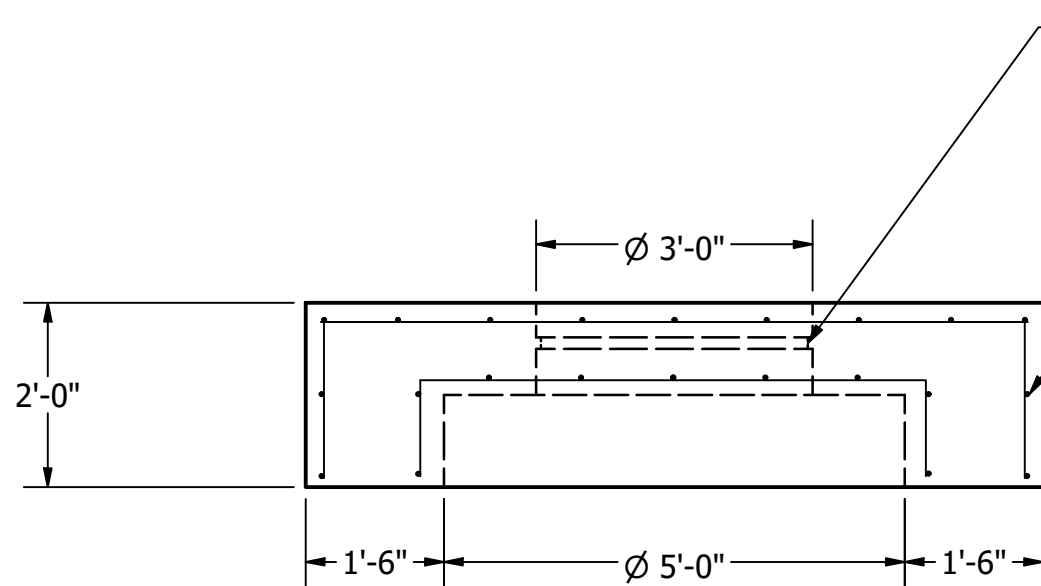
LOCATION:



#6 U BARS @ 12" O.C.E.W
 (2) MATS
 (A706 grade 60)

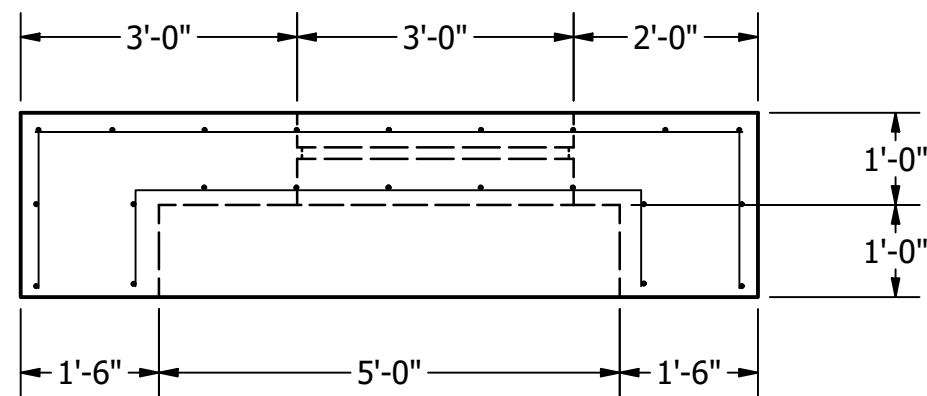
ALL STEEL HAS A 2" CLEAR

BOTH FACES
 (4 EACH FACE) #6 BARS 52" LONG
 AROUND 36" OPENING



SAFETY GRATE

(2) #6 PRIM BARS
 EACH MAT



REVISIONS:	No.	DATE	DESCRIPTION

THE CONTENTS OF THESE DRAWINGS ARE THE PROPERTY OF PRECON PRODUCTS AND ARE PROPRIETARY AND CONFIDENTIAL. THESE DOCUMENTS SHALL NOT BE DISSEMINATED FOR ANY OTHER USE, WITHOUT THE WRITTEN CONSENT OF PRECON PRODUCTS. IF YOU RECEIVE THESE DRAWINGS IN ERROR, RETURN TO SENDER WITHOUT READING, COPYING, OR DISCLOSING THE CONTENTS.



TITLE:
**DRYWELL FLAT TOP,
 LOS ANGELES COUNTY**

DRAWN BY:
K.STRADER

DATE
1/31/2019

SHEET
6 OF 6

LOCATION: